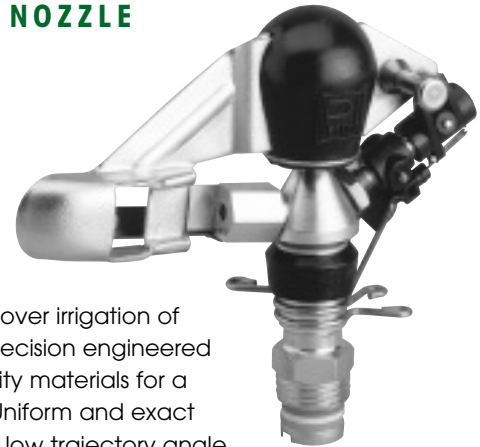




## FULL CIRCLE IMPACT SPRINKLER ZA 7 SINGLE NOZZLE

## FULL CIRCLE IMPACT SPRINKLER ZA 7 D TWIN NOZZLE

## FULL & PART CIRCLE IMPACT SPRINKLER ZA 7 W SINGLE NOZZLE



### Appliance and use

ZA sprinklers are specifically recommended for the undercover irrigation of orchards, bananas, almonds and olive groves. They are precision engineered to a tried and tested design and manufactured from quality materials for a long and trouble-free life even when in constant service. Uniform and exact water distribution on unprotected sites is ensured due to a low trajectory angle. The ZA is a reliable partner in exposed, windy areas.

### Features

- 7° trajectory angle
- Not sensitive to wind
- Nozzle with jet breaker

### Available types

ZA 7 – single nozzle full circle  
 ZA 7 D – twin nozzle full circle  
 ZA 7 W – single nozzle full and part circle. With flip-up control lever so that sprinkler can be used as full or part circle sprinkler.

### Materials

Pipe axle	Brass	Impact lever	Brass
Torsion spring	Stainless steel	Protective cap	Quality plastic
Guide bush	Brass	Nozzle	Brass
Elbow	Brass	Sector device	Quality plastic with steel shaft

**Connection** 1/2" male thread

### Sprinkler specification and performance table

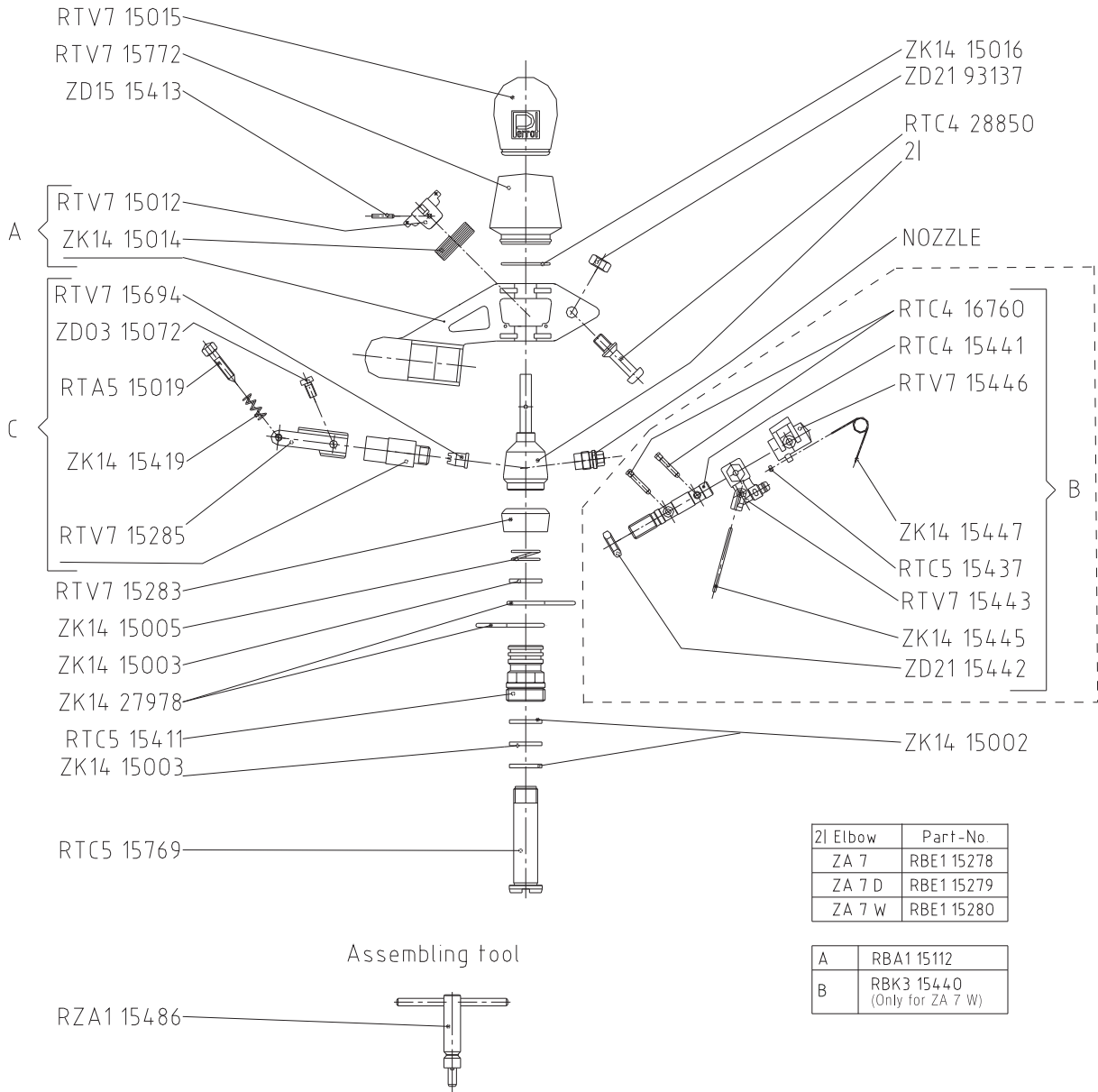
Diameter nozzle (mm)	P					P 2.5 bar		P 3.0 bar		P 3.5 bar		P 4.0 bar		P 4.5 bar	
	2.5 bar	3.0 bar	3.5 bar	4.0 bar	4.5 bar	▲	■	▲	■	▲	■	▲	■	▲	■
<b>Casting range (m)</b>															
3.5**	8.0	8.4	8.9	9.5	10.1	15x13	12x12	15x13	12x12	15x13	12x12	15x13	12x12	15x13	12x12
3.8	8.5	9.0	9.5	10.0	10.5	15x13	12x12	15x13	12x12	15x13	12x12	15x13	12x12	15x13	12x12
4.0	8.9	9.4	9.9	10.4	10.9	15x13	12x12	15x13	12x12	15x13	12x12	15x13	12x12	15x13	12x12
4.2	9.0	9.6	10.0	10.6	11.1	15x13	12x12	15x13	12x12	15x13	12x12	15x13	12x12	15x13	12x12
4.5	9.2	9.8	10.4	10.8	11.2	15x13	12x12	15x13	12x12	15x13	12x12	15x13	12x12	15x13	12x12
<b>ZA 7 / ZA 7 W Water consumption Q (m³/h)</b>															
3.5**	0.69	0.75	0.82	0.87	0.92	3.5	4.8	3.8	5.2	4.2	5.7	4.5	6.0	4.7	6.4
3.8	0.81	0.89	0.96	1.03	1.09	4.2	5.6	4.6	6.2	4.9	6.7	5.3	7.2	5.6	7.6
4.0	0.90	0.99	1.06	1.14	1.21	4.6	6.3	5.1	6.9	5.4	7.4	5.8	7.9	6.2	8.4
4.2	0.99	1.09	1.17	1.26	1.33	5.1	6.9	5.6	7.6	6.0	8.1	6.5	8.8	6.8	9.2
4.5	1.14	1.25	1.35	1.44	1.53	5.8	7.9	6.4	8.7	6.9	9.4	7.4	10.0	7.8	10.6
<b>ZA 7 D Water consumption Q (m³/h)</b>															
3.5x2.4	1.01	1.11	1.20	1.28	1.36	5.2	7.0	5.7	7.7	6.2	8.3	6.7	8.9	7.0	9.4
3.8x2.4	1.14	1.24	1.34	1.44	1.52	5.8	7.9	6.4	8.6	6.9	9.3	7.4	10.0	7.8	10.6
4.0x2.4	1.22	1.34	1.45	1.55	1.64	6.3	8.5	6.9	9.3	7.3	10.0	7.9	10.8	8.4	11.4
4.2x2.4	1.32	1.44	1.56	1.66	1.77	6.8	9.2	7.4	10.0	8.0	10.8	8.5	11.5	9.1	12.3
4.5x2.4	1.46	1.60	1.73	1.85	1.96	7.5	10.1	8.2	11.1	8.9	12.0	9.5	12.8	10.1	13.6

The suggested sprinkler spacings are valid for wind-free conditions, a temperature of +15°C and a sprinkler installation height of 0m above ground level. Sprinkler installation in a ▲ pattern is for optimum water distribution and for solid sets. Sprinkler installation in a ■ pattern is recommended for solid set and moveable sprinkler systems.  
 \*Precipitation is only valid for full circle irrigation. \*\* Only as full circle sprinkler.





### ZA 7 / W / D PARTS DIAGRAM



ZI Elbow	Part-No.
ZA 7	RBE1 15278
ZA 7 D	RBE1 15279
ZA 7 W	RBE1 15280

A	RBA1 15112
B	RBK3 15440 (Only for ZA 7 W)